

The Glenbrook



4-5 BEDROOMS • 3-4 BATHS • 3683 SQ. FT.

ELEVATION A

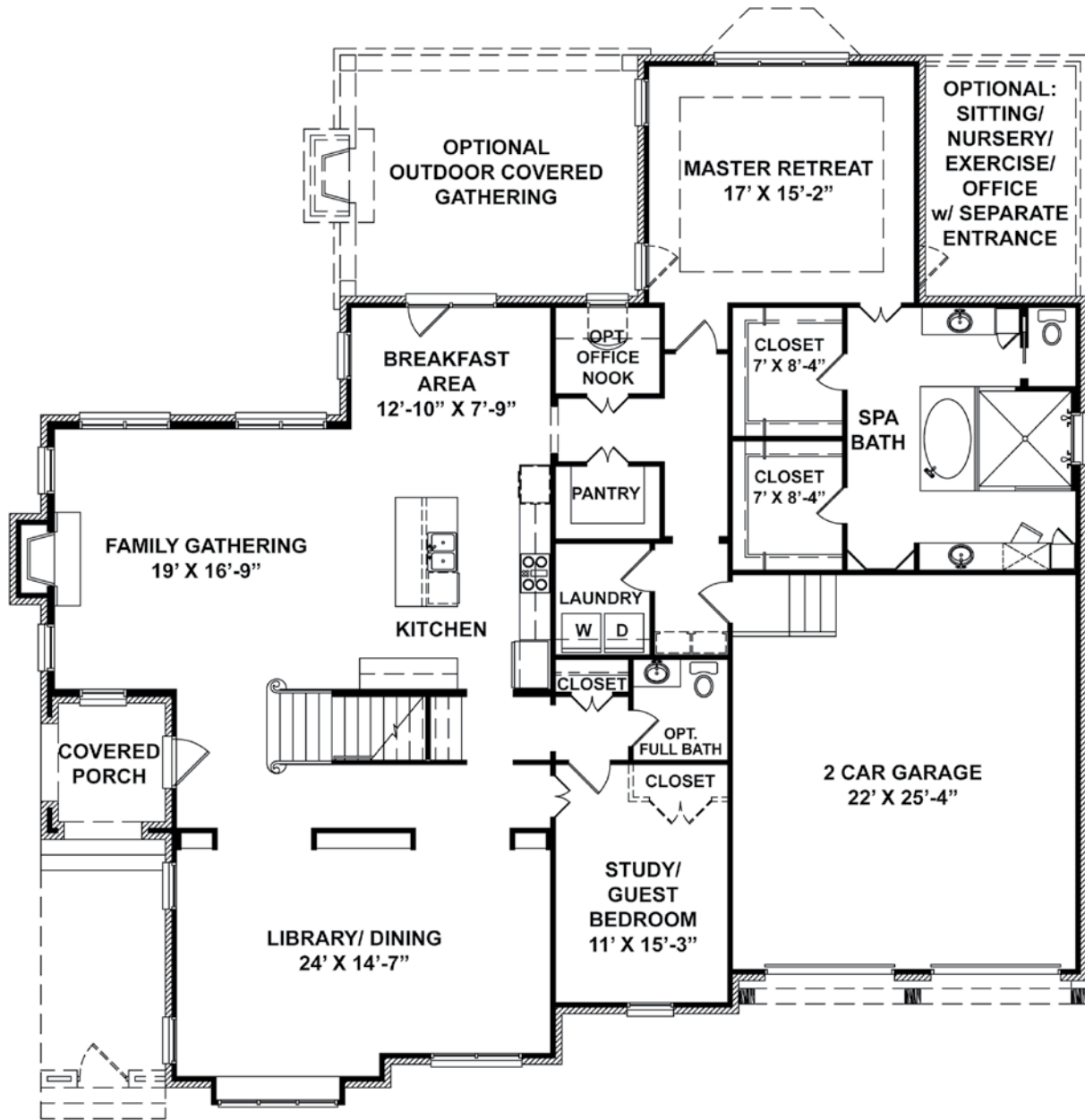


ELEVATION B

RIVERBIRCH HOMES AT ARRINGTON RETREAT

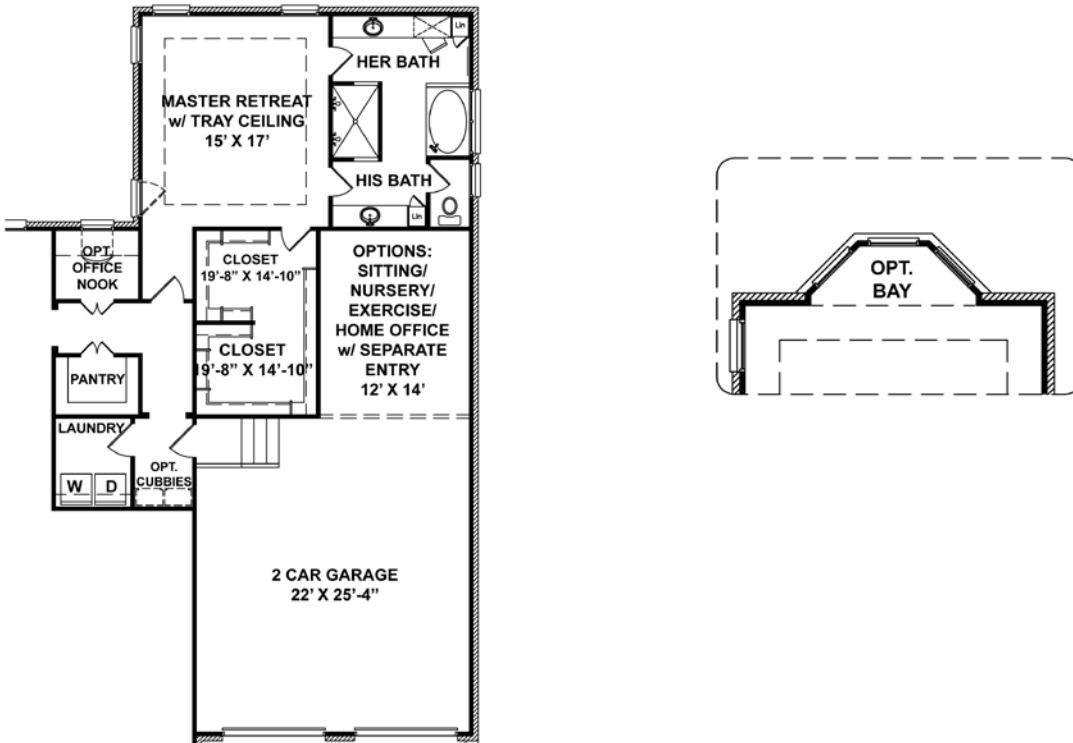
Sales by Jennifer Bickerstaff, The Oxford Company • 615.628.9113 • jenniferbickerstaff@yahoo.com

FIRST FLOOR • THE GLENBROOK

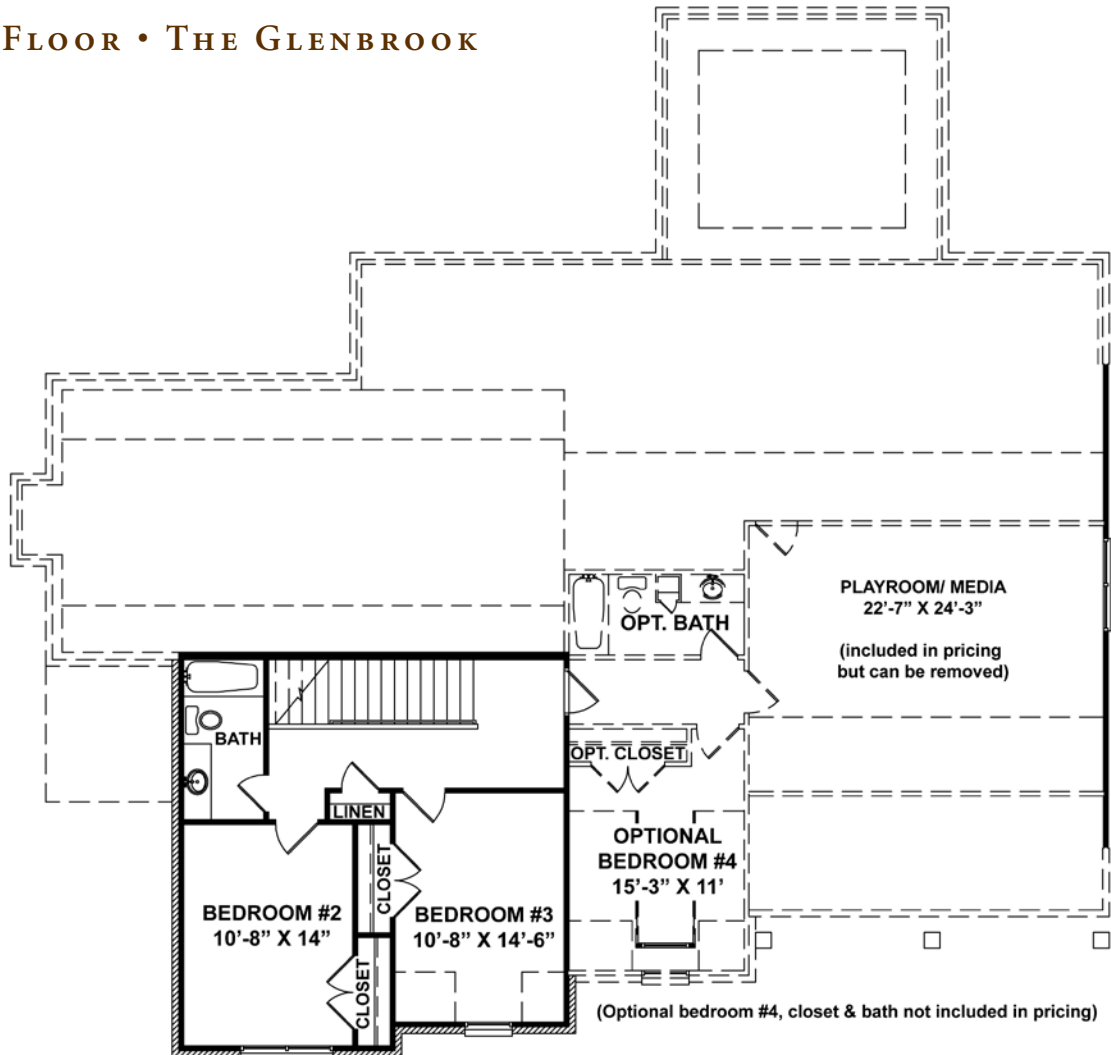


Note: Half bath off Study/Guest Bedroom is standard. Full bath is available as an option.

FIRST FLOOR OPTIONS • THE GLENBROOK



SECOND FLOOR • THE GLENBROOK



STANDARD FEATURES

Compare these features before you buy. Yes, it's all included!

Exterior Features

- Timeless exterior elevations drawn by Brad Shapiro Architect
- Eight-foot solid front door with deadbolt
- Two car garages with carriage style doors
- Hardi-Plank masonry siding with 50-year manufacturer's limited warranty
- Brick front and three sides, per plan
- Designer roof shingles with 25-year manufacturer's limited warranty
- Custom-made antique bronze address plates
- Two exterior faucets per plan
- Front and rear GFI outlets
- Broom-finished patios
- Professionally landscaped
- Mailbox with cast iron stand
- Gutters on all eaves of home with collectors and downspouts per plan
- Garage with sheetrock and paint
- Doorbell with chime

Quality Interior Features

- Custom-finished nine-foot minimum ceilings with higher on vaulted areas per plan
- Oil-rubbed bronze hardware
- Raised two-panel interior doors with 3-1/2" door trim
- 4-1/4" crown molding in entry and formal dining room
- 4-1/4" base molding first floor
- Copper electric wiring
- Smoke detectors with battery back-ups
- Designer lighting package in choice of oil-rubbed bronze
- Sand and finish oak flooring in entry, kitchen, breakfast room
- Tile floors in laundry room
- 36" ventless fireplace and tile surround with gas logs
- Contrasting interior wall paint and semi-gloss trim
- Large closets with durable ventilated shelving
- Wall-to-wall stain-resistant carpet with high-density pad

Professionally Decorated Kitchens

- Custom-designed gourmet kitchen with abundant cabinet space
- Stainless steel smooth-top electric cooktop with double self-cleaning ovens, stainless Quiet Wash dishwasher, stainless

- microwave and 1/2 HP disposal
- Real maple cabinets with concealed hinges
- Double bowl, extra-deep stainless undermount sink
- Granite tops

Luxurious Bath Features

- Oversized soaking tubs with separate showers
- 36" vanities with undermount sinks in master bath
- Custom-made cultured marble vanity tops
- Real maple cabinets in master and secondary baths
- Ceramic tile on all bath floors

Safety & Energy-Saving Features

- 13 SEER fully matched heating and cooling systems
- Digital thermostats
- Pilotless gas central heating system
- Energy-efficient gas water heater
- Ground fault interrupters at the kitchen, baths and exterior outlets
- Low E wood windows with enhancing grille accents
- House wrap
- R-38 blown insulation in ceilings
- R-30 insulation in vaults
- R-13 wall rating

Techniques

- RiverBirch Homeowners Manual
- Custom-fit construction, no prefab materials
- 16" stud spacing on all exterior and interior walls
- 3/4" T&G sub-flooring (glued, nailed and screwed)
- Scheduled inspections with your Personal Builder to assure satisfaction

Interior Design Consultation

All homeowners benefit from a consultation with an interior designer to assist with color selections and customizing design choices to your taste and preferences

Team Commitment

Throughout the building process, your Personal Builder and Sales Consultant are meeting you periodically and communicating with you regarding the specifics of your home.